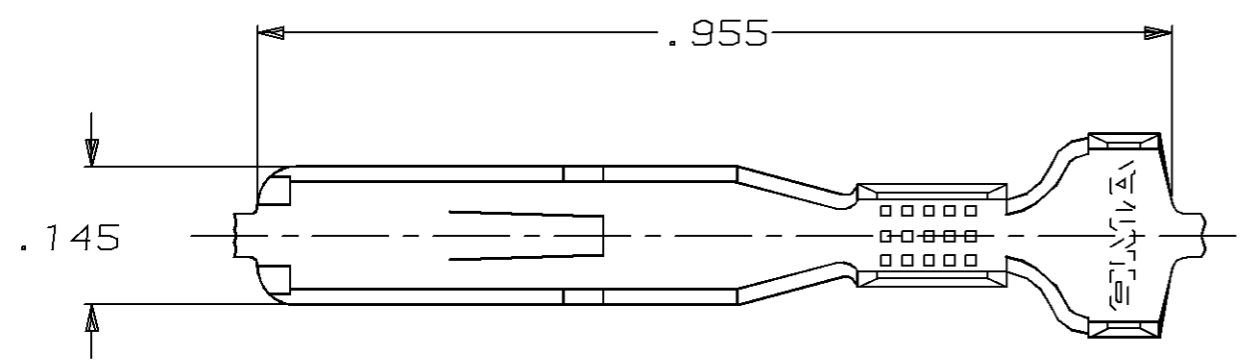
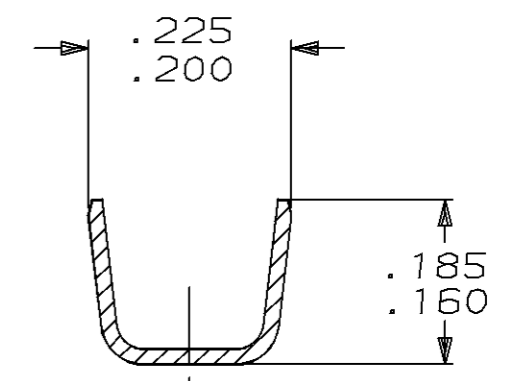
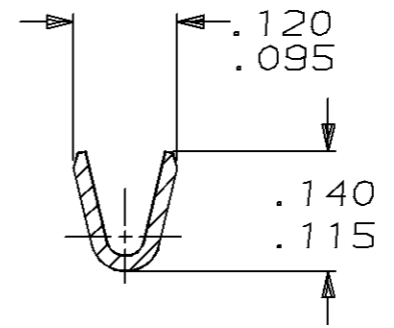
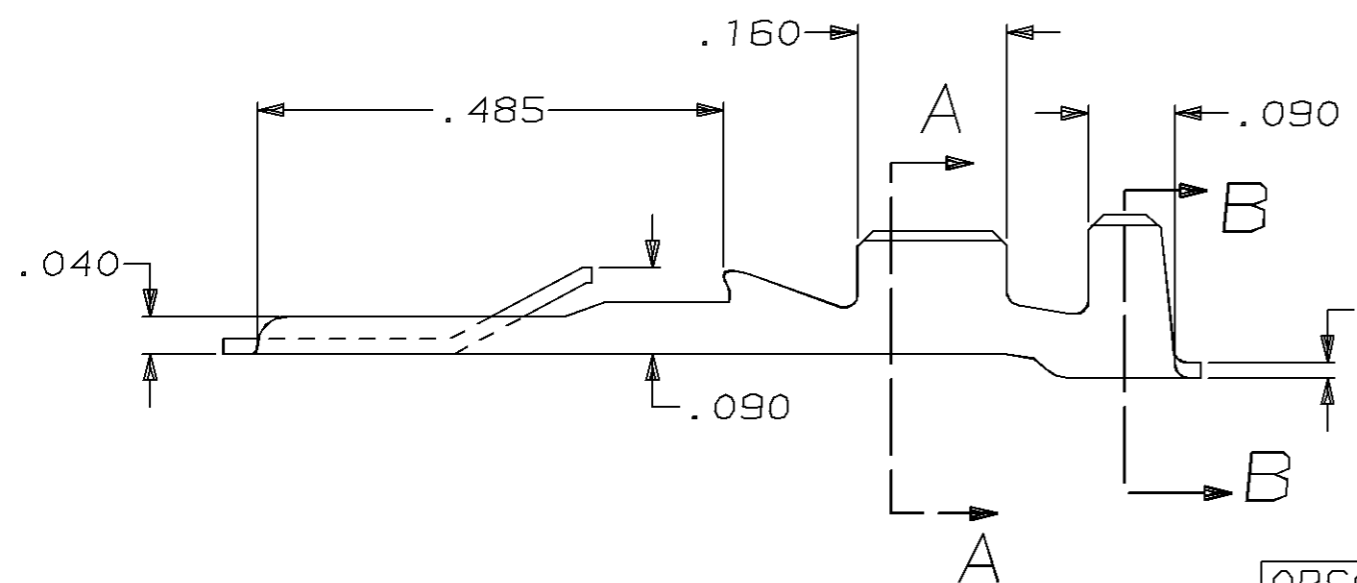


THIS DRAWING IS UNPUBLISHED. RELEASED FOR PUBLICATION, 19 .
 © COPYRIGHT 19 BY AMP INCORPORATED. ALL INTERNATIONAL RIGHTS RESERVED.

LOC	DIST	P	F	ZONE	LTR	REVISIONS	DATE	APPD
AF	50				M	REDRAWN PER 0016-95	1/24/95	JR/JG



1 CONTINUOUS STRIP ON REELS.
 2 FOR FOREIGN PRODUCTION ONLY.



OBSOLETE	.090-.130	#20-#16 AWG	TIN .000080 MIN	H04 BRASS	△60434-3
OBSOLETE	OR (TWO) .110 MAX		-	H04 PH05 BRZ	△60434-2
			PRE-TIN	H04 BRASS	60434-1

F	.180	.220	F	.080	.064	(2) #20
					.069	16
					.060	18
					.055	20
TYPE	WIDTH	STRIP LENGTH ±.015	TYPE	WIDTH	±.002 HEIGHT	WIRE
INSUL BARREL CRIMP			WIRE BARREL CRIMP			

DO NOT SCALE PRINT. UNLESS SPECIFIED DIMENSIONS IN INCHES TOLERANCES ON:
 2 PLC DEC ± -
 3 PLC DEC ± .015
 ANGLES ± -
 MATERIAL SEE TABLE
 FINISH SEE TABLE

DR 1/24/95
 JR RUTH
 CHK 1/24/95
 MS FEHER
 APPD 1/24/95
 J GILLESPIE
 APPD 1/24/95
 R REINER
 PRODUCT SPEC -
 APPLICATION SPEC 114-2023
 WEIGHT -

AMP AMP Incorporated
 Harrisburg, PA 17105-3608

NAME
**CHANNEL TAB, FASTIN-FASTON,
 .187 SERIES**

SIZE	CAGE CODE	DRAWING NO
B	00779	C-60434
SCALE	SHEET	
5:1	1 OF 1	

THIS DRAWING IS A CONTROLLED DOCUMENT FOR AMP INCORPORATED. IT IS SUBJECT TO CHANGE AND THE CONTROLLING ENGINEERING ORGANIZATION SHOULD BE CONTACTED FOR THE LATEST REVISION.